

Spot Repairs



It is common for only one or few sections of pipe to show cracking, fracture, or offsets.

In this case, with our edge-cutting technology, we can repair the damaged sections without any excavation or ground disturbance.

We use epoxy and fiberglass liners that are pulled or pushed into place.

Cure-In-Place-Pipe (CIPP)

structural spot repair is the most practical and cost-effective method to repair a short length of damaged pipes with diameters from 100 mm to 1200 mm and continuous length up to 3 meters.

Why Choose API Ltd.

- Industry Experience
- Technology Driven
- Safety & Environment
- One Stop Shop
- Cost Effective
- Delivered on time



Our Associations and Certifications



Alberta Construction
Safety Association



ASTM
INTERNATIONAL



Contact Us

API Ltd

4644-82 Ave NW, Edmonton

[780-217-2222](tel:780-217-2222)

info@albertapipe.ca

albertapipe.ca

t: [780-217-2222](tel:780-217-2222), info@albertapipe.ca

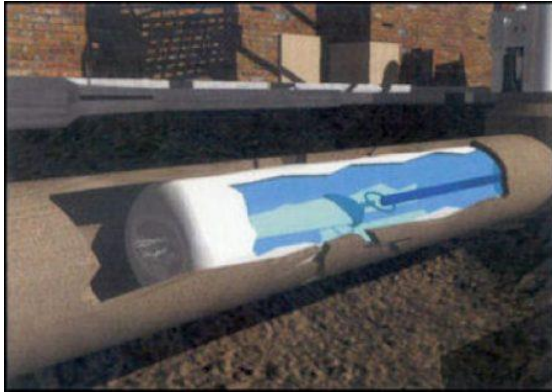


API Ltd. is an Edmonton based company; a leader in providing sustainable solutions to rehabilitate sewer mainlines, manholes, pump stations, and culverts in our cities by the means of the trenchless technologies, also known as “**Cured-In-Place**” (CIP).

Our Services

- Sewer Mainline Rehabilitation
- Manhole, Culvert, and Pump Station Rehabilitation
- Sewer Line Spot Repairs
- Closed Circuit Television (CCTV) Inspection of Sewer Lines and Manholes
- High Pressure Flushing and Vacuum Sewer Lines and Manholes





Cure-in-Place (CIP) Method Advantages

- Up to 40% savings over replacement
- No destructive trenches
- Minimal interruption
- Eco-friendly repairs
- Increased flow capacity
- 50+ years of use

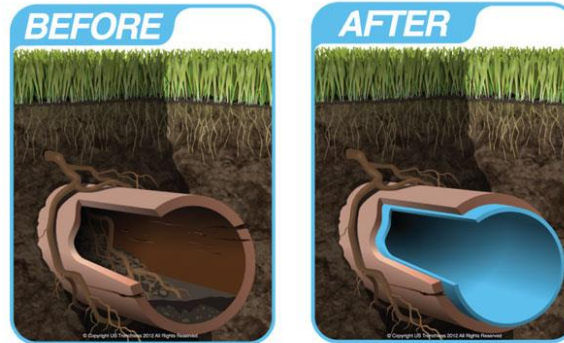
CIP Method at Glance

- CCTV inspection & detailed study of existing structures
- Cleaning of the sewer system by using hydro jetting and mechanical cleaning process
- Lining with resin saturated liner & reinstatement
- Post rehabilitation inspection with the reports

Sewer Mainline Rehabilitation

Cure in Place Pipe (CIPP) is a technology that prevents ground dig ups, lessens traffic disruptions, and makes your sewer pipe as good as new!

CIPP is considered as the most economical method of sewer pipe rehabilitation.



The cleaned pipes are lined with resin saturated liner. The liner cures via steam. Robotic equipment is used to reopen branch lines.

When your sewer pipe requires rehabilitation due to poor condition, our crew of experienced rehabilitants can reline the full length of the pipe using our **CIPP** full reline method.

Manhole, Pump Station, and Culvert Rehab

For manholes, pump stations and culverts rehabilitation, **Cured-in-Place (CIP)** liner system is the best solution for fixing the deteriorated structures.

This method is also considered as the most economical compared to open cut, dig, and install of the new structures.

This manhole liner installation is usually completed in 4-6 hours which is a great advantage over more traditional "dig and replace" method.

The **CIP** liner manhole rehabilitation system extends the life of the structure for 50+ years.

